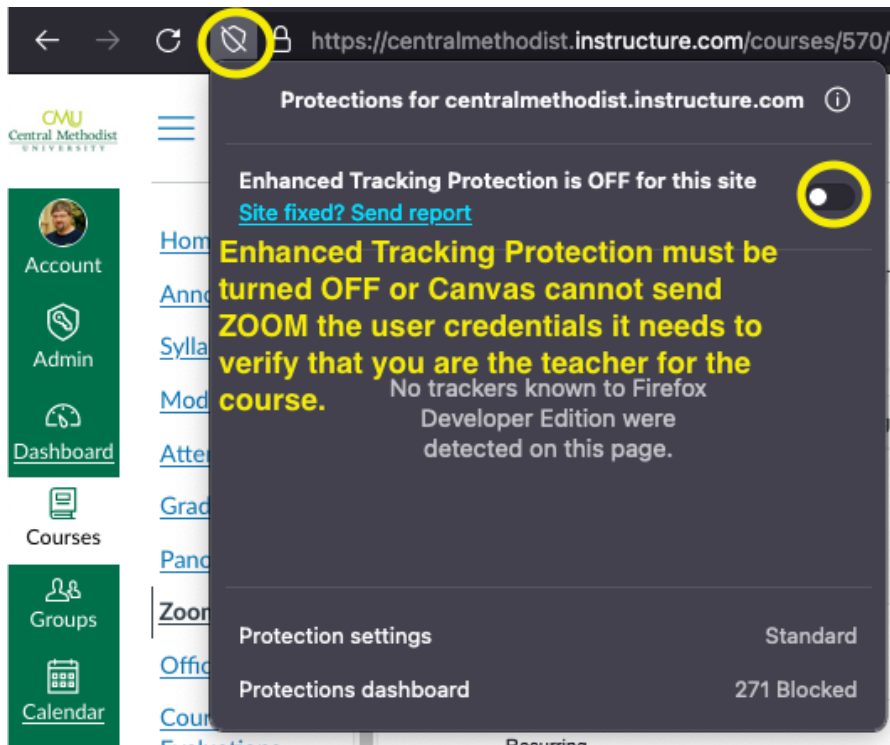
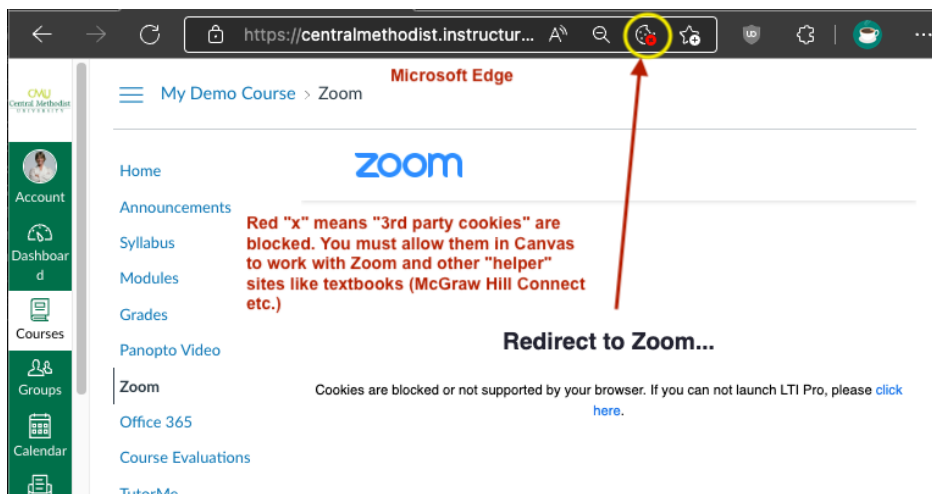


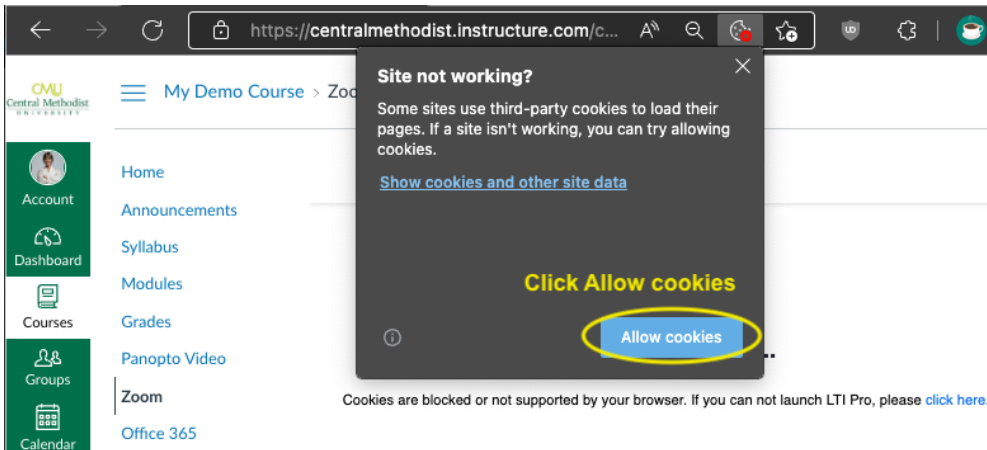
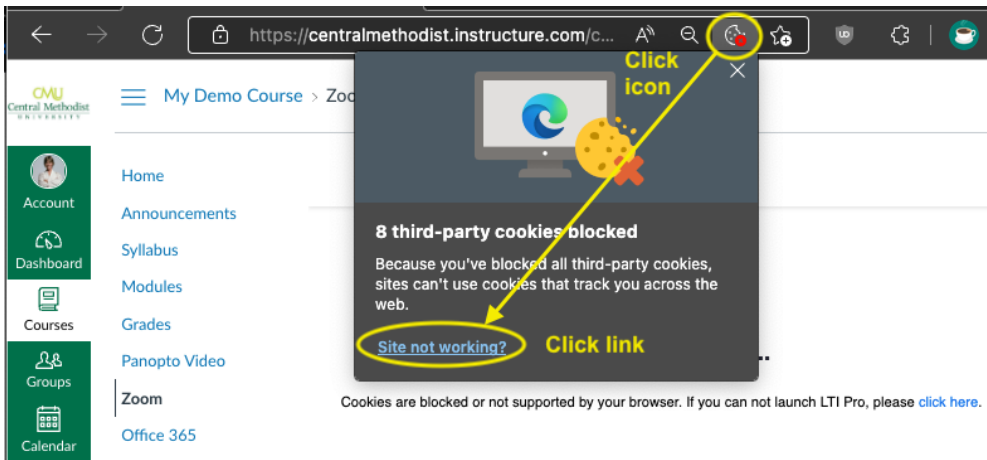
Security & Tracking Settings for Canvas to work with “Partner sites”

Firefox Enhanced Tracking Security

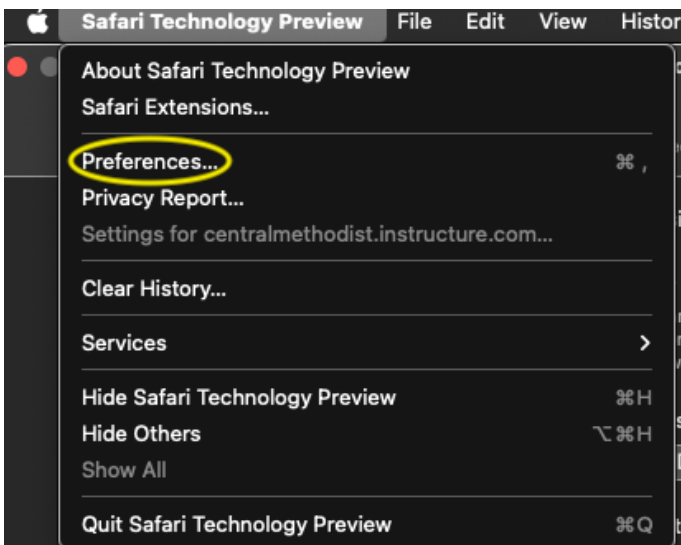


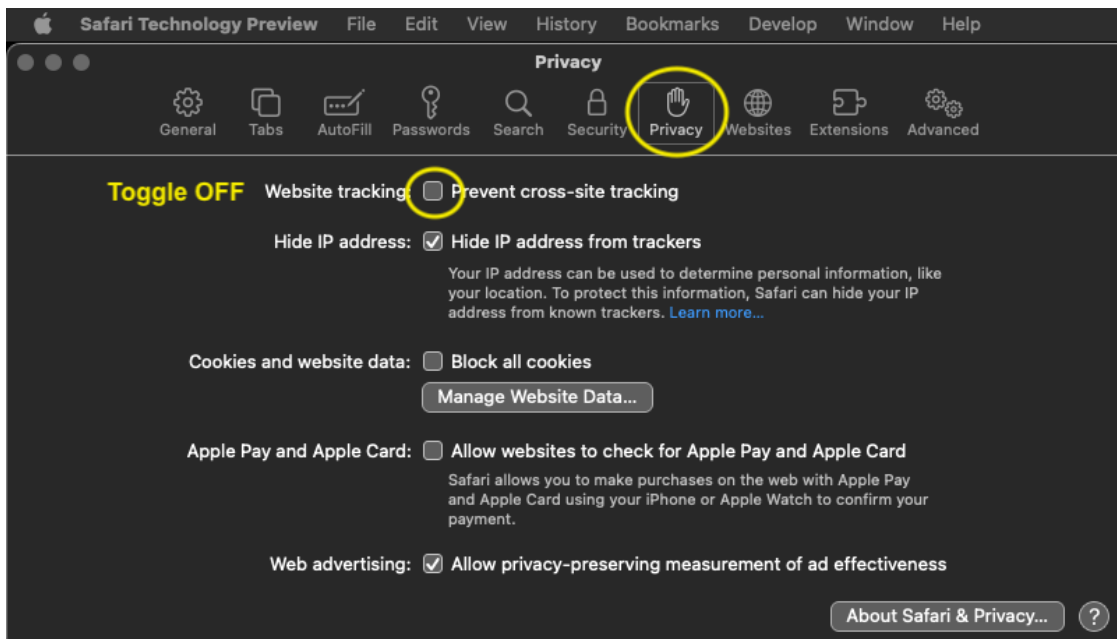
Microsoft Edge Third Party Cookies





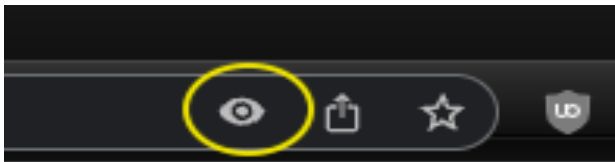
Safari Cross-Site Tracking





Google Chrome

Google makes it's \$\$\$ by tracking you around the web, so these security settings are usually not enabled in Google Chrome by default. If they have been set, use the same instructions as those for Microsoft Edge, above. The only difference is that instead of the icon looking like a chocolate chip cookie, it looks like an “eye”.



uBlock Origin security add-on/Extension

If this add-on/extension has been installed on your browser, it may block sites or JavaScript etc. that some legitimate websites need to operate properly. Open its red shield icon on the right-side of the URL bar and click the blue button to disable it for that website. Reload the page and see if the site works properly. (This extension should be turned OFF for Canvas, myCMU and other CMU relates websites like the Library search pages.)

